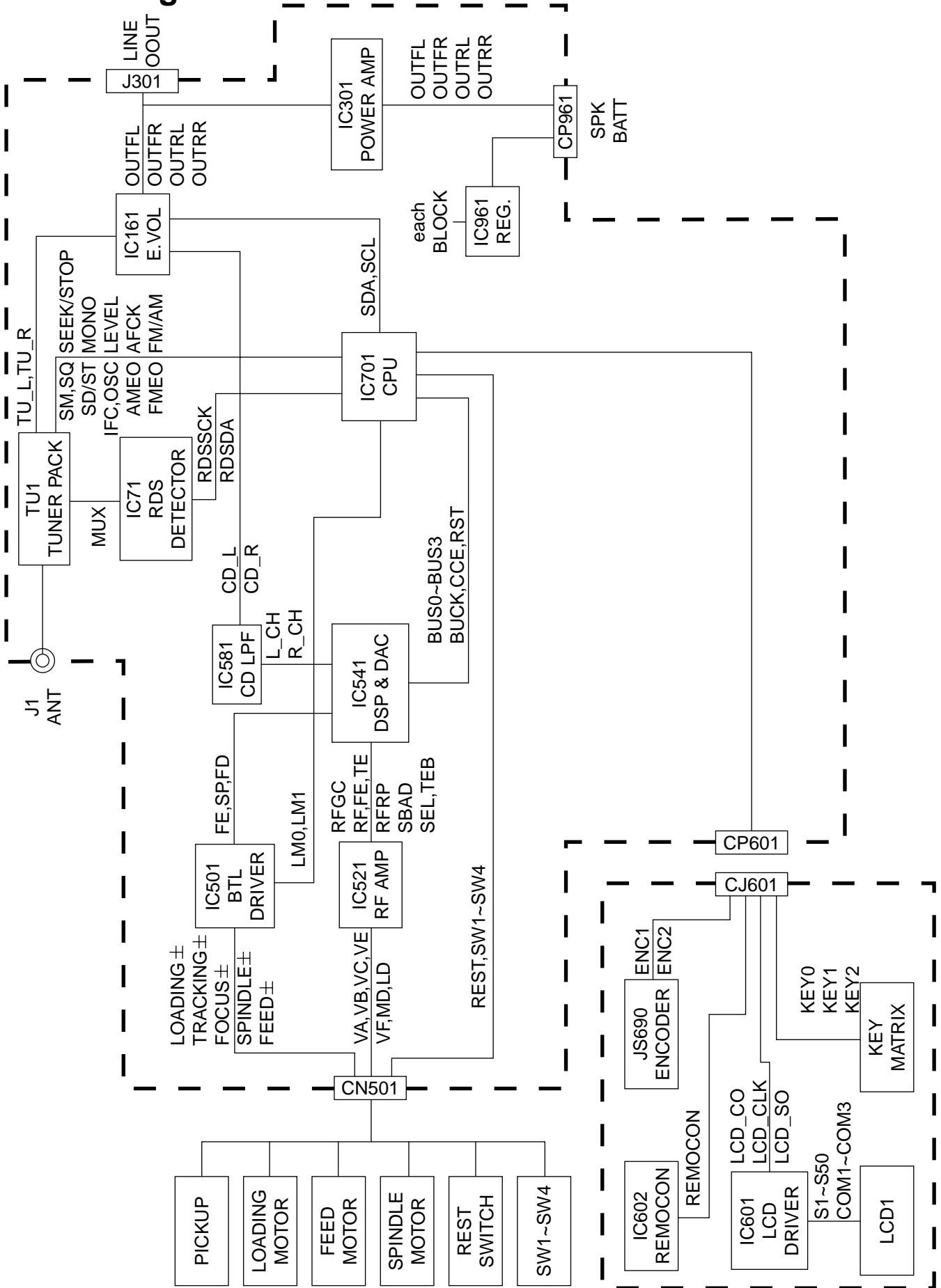


# Block diagram

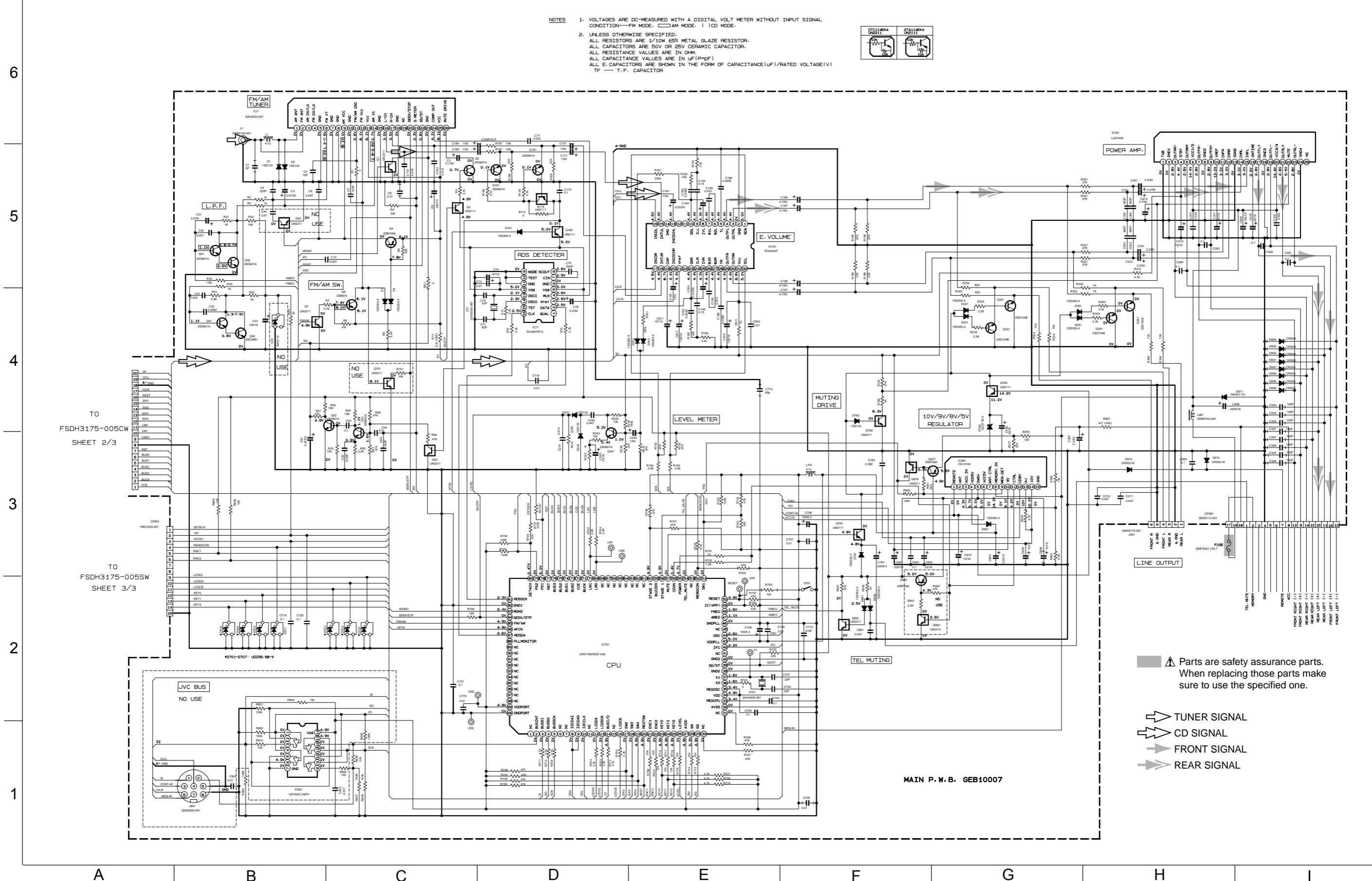
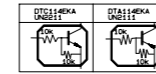


< MEMO >

# Standard schematic diagrams

## ■ Main amp section

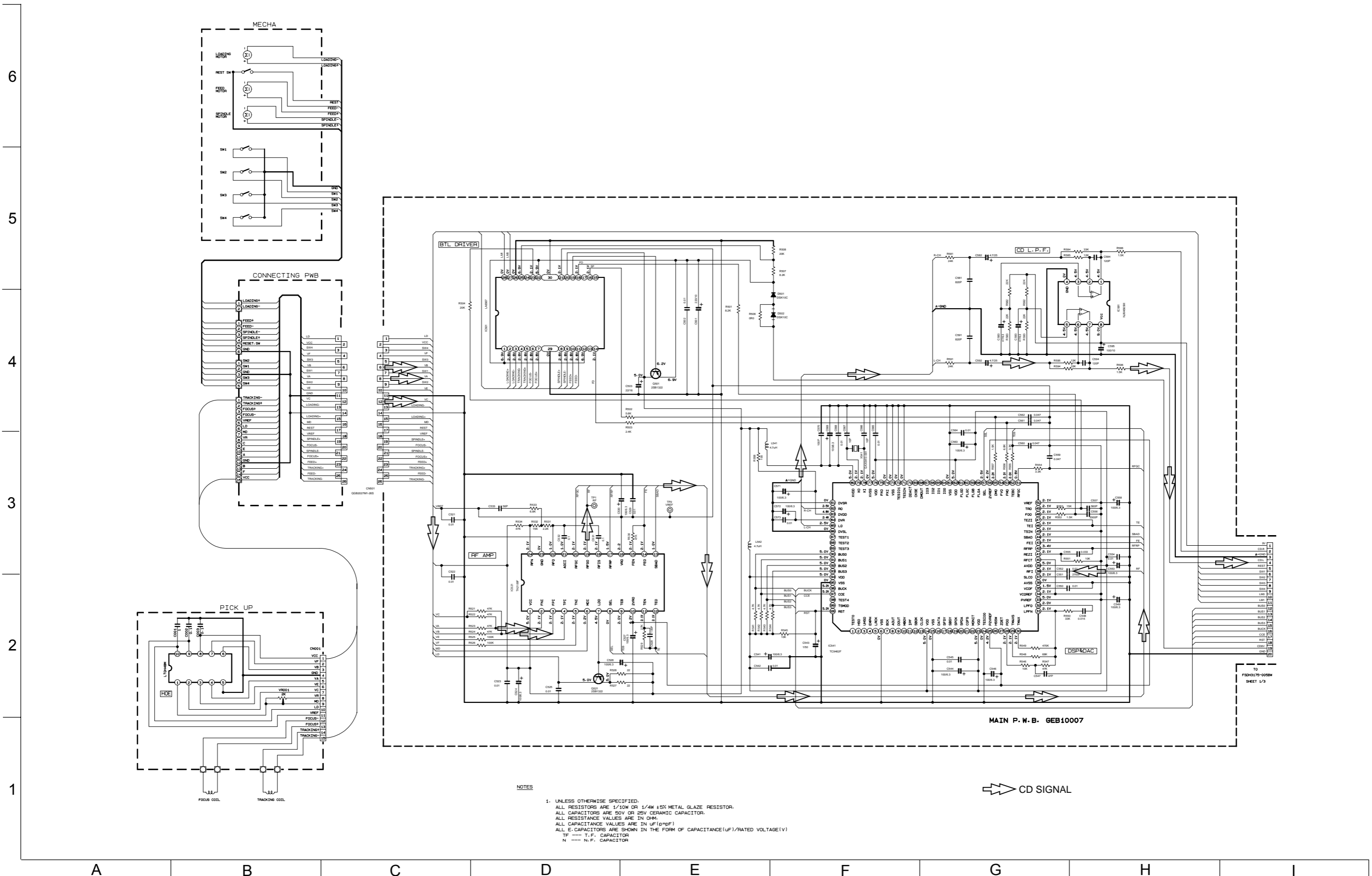
- NOTES
1. VOLTAGES ARE DC-MEASURED WITH A DIGITAL VOLT METER WITHOUT INPUT SIGNAL CONDITION—FM MODE: □ AM MODE: ( ) CD MODE.
  2. UNLESS OTHERWISE SPECIFIED:  
 ALL RESISTORS ARE 1/10W 5% METAL GLAZE RESISTOR.  
 ALL CAPACITORS ARE 50V OR 25V CERAMIC CAPACITOR.  
 ALL RESISTANCE VALUES ARE IN OHM.  
 ALL CAPACITANCE VALUES ARE IN uF(P=pF)  
 ALL E-CAPACITORS ARE SHOWN IN THE FORM OF CAPACITANCE(uF)/RATED VOLTAGE(V)  
 TF — T.F. CAPACITOR



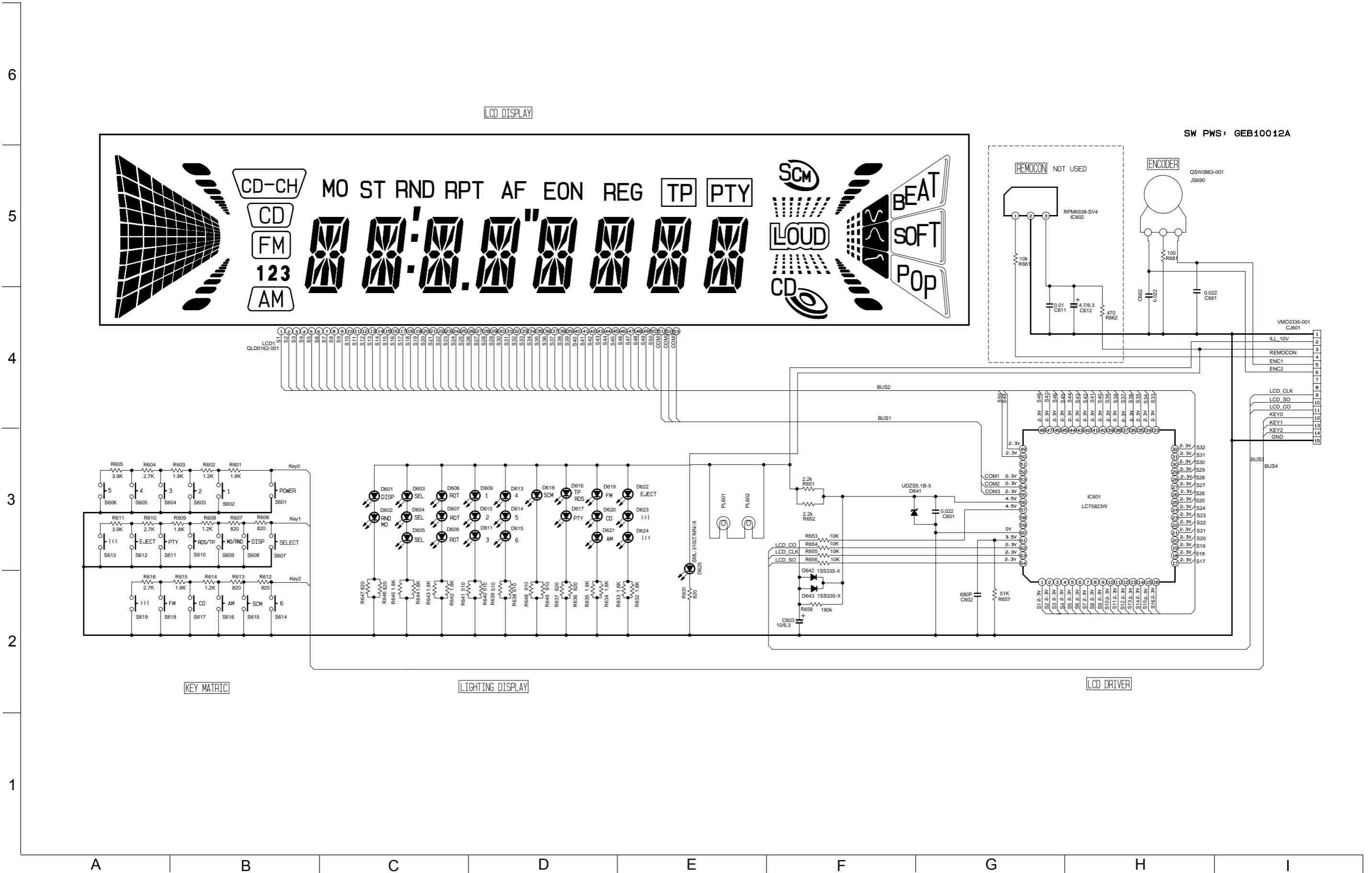
- ▲ Parts are safety assurance parts. When replacing those parts make sure to use the specified one.
- ➔ TUNER SIGNAL
- ➔ CD SIGNAL
- ➔ FRONT SIGNAL
- ➔ REAR SIGNAL

MAIN P. W. B. GEB10007

CD servo section

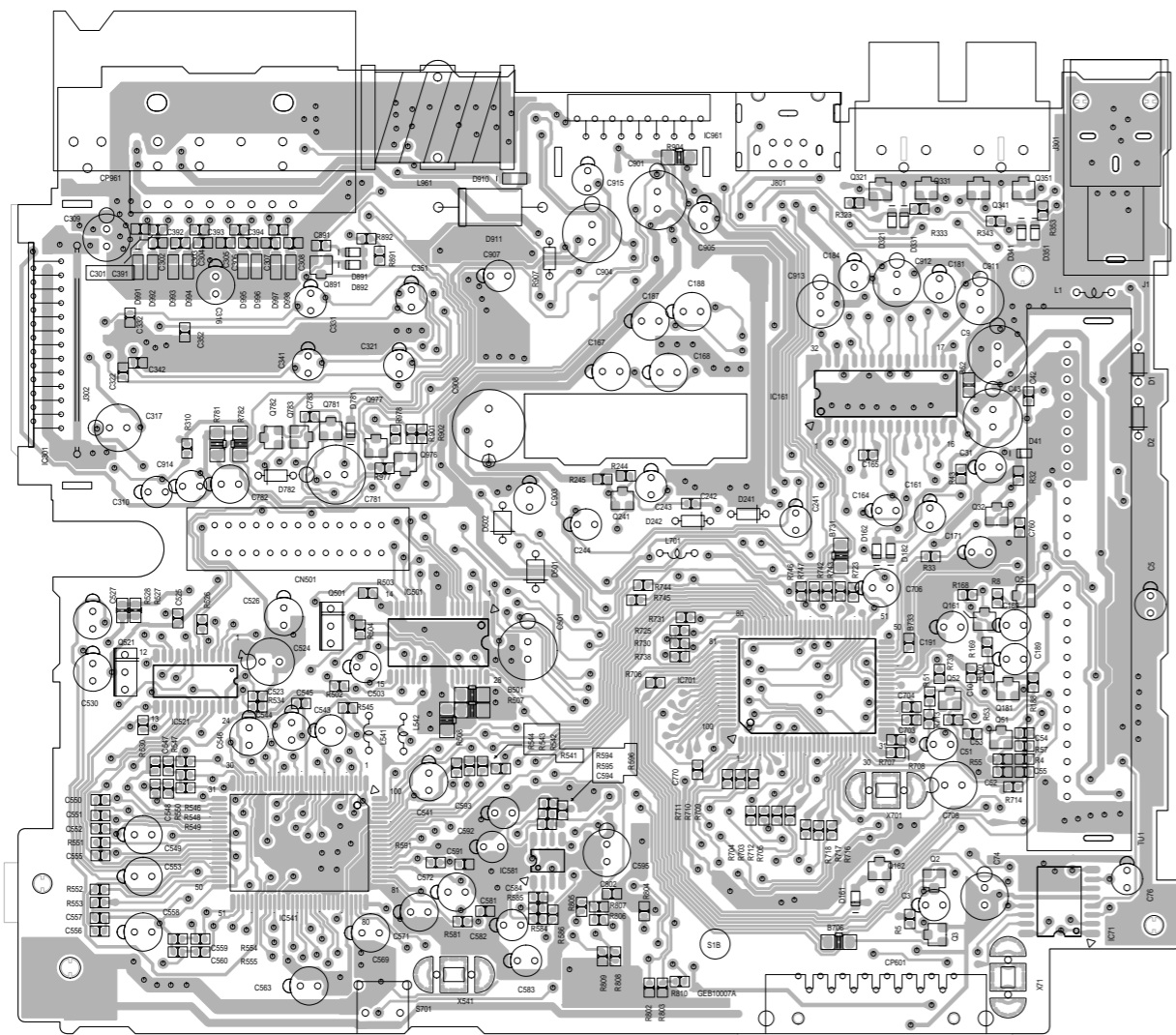


■ LCD & Key control section

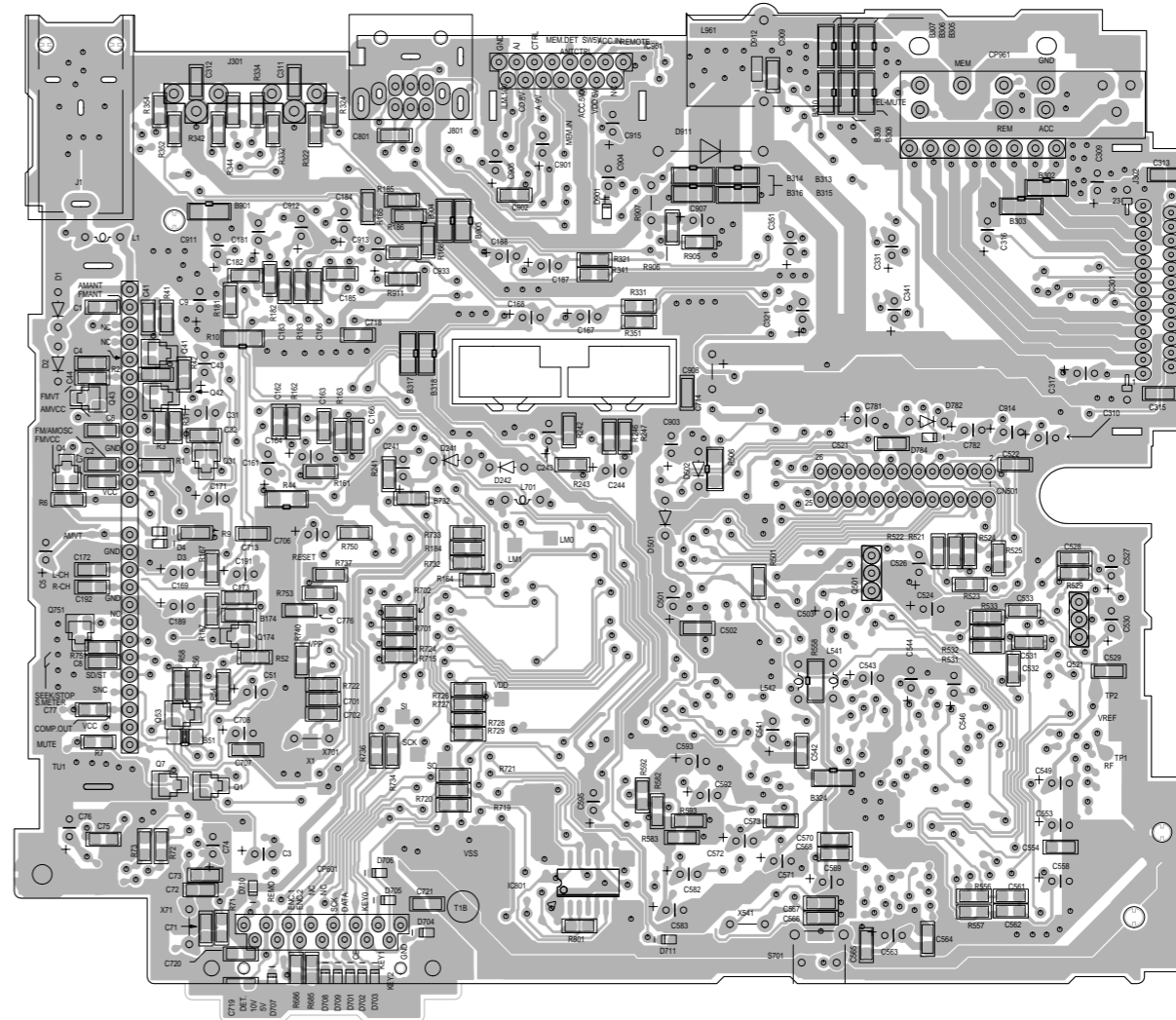


# Printed circuit boards

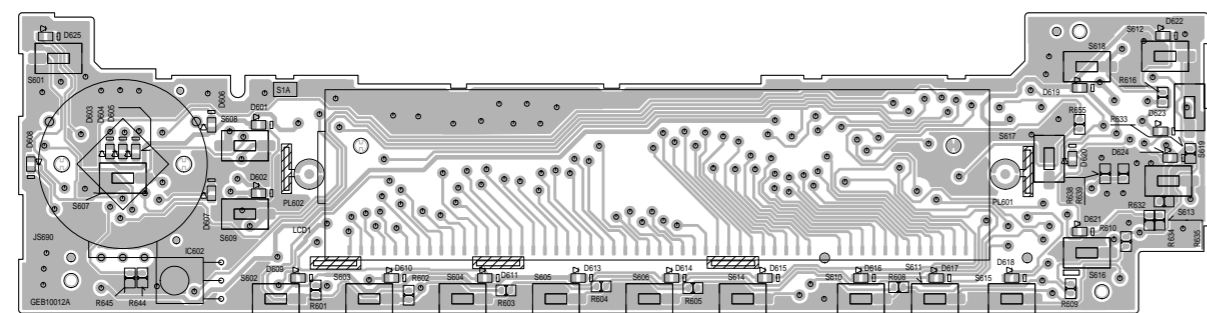
■ Main board (Foward side)



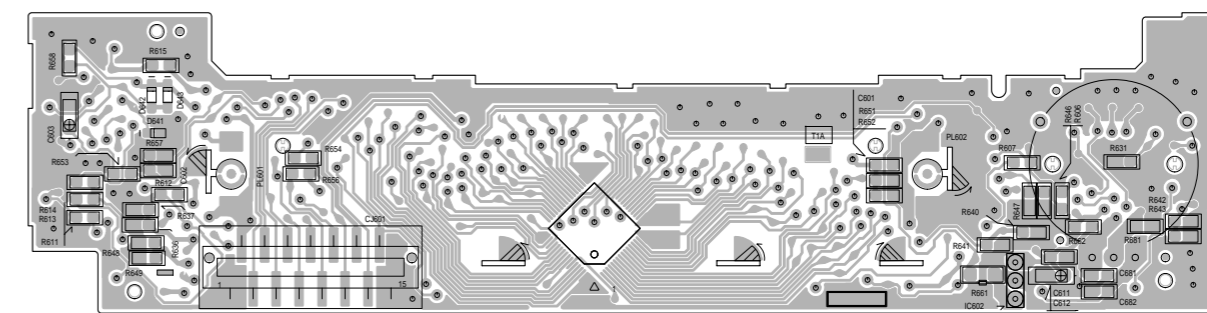
■ Main board (Reverse side)



■ Front board (Foward side)



■ Front board (Reverse side)



6  
5  
4  
3  
2  
1

A B C D E F G H I